

# STRUCTURAL ENGINEERING

---



Photo Credit: Alistair Tutton Photography



**McLaren**  
ENGINEERING GROUP





**McLaren Engineering Group – Headquarters**  
530 Chestnut Ridge Road, Woodcliff Lake, NJ 07677  
Ph. 1-800-420-6401

49  
STATES  
LICENSED

20k+  
PROJECTS  
COMPLETED

45  
YEARS OF  
APPLIED INGENUITY

11  
OFFICES  
WORLDWIDE



## About Us

McLaren Engineering Group is a leading full-service engineering firm renowned for its trusted, high quality, and innovative approach to solving complex challenges. With industry experts in multiple technical disciplines, our team has provided customized solutions for over 20,000 projects through consultation, design, inspection, and construction management. With over four decades of experience, a staff of 200+, and 11 offices worldwide, McLaren addresses every project's specific needs with technical excellence and creative innovation.



**DAVID MCLAREN, PE**  
Vice President – Structures  
[dmclaren@mgmclaren.com](mailto:dmclaren@mgmclaren.com)

## Core Technical Divisions

STRUCTURAL | CIVIL + SITE | MARINE + COASTAL | BRIDGE, HIGHWAY + RAIL  
ENTERTAINMENT | GEOTECHNICAL | FACADE + BUILDING ENVELOPE  
CONSTRUCTION ENGINEERING | FORENSICS | SURVEY + MAPPING





164 Kent - NYC



# STRUCTURAL ENGINEERING

With a wide range of services spanning concept to completion, McLaren's structural engineering group is built on a foundation of technical excellence, cutting-edge capabilities, pragmatic solutions and a sensitivity for aesthetics.

Specializing in both private and public work across 10 distinct markets, our firm delivers industry leading, project-based solutions for structures of every size, shape, scope, material, and complexity.

Our expert structural engineers offer multidisciplinary consulting, analysis, design, and construction phase support that helps clients build more efficiently, cost effectively, and meet all project goals.

NEW CONSTRUCTION  
ENGINEERING + DESIGN

ADDITIONS, ALTERATIONS,  
RENOVATIONS + REPAIRS

STRUCTURAL INSPECTION +  
INVESTIGATION

FACADE + BUILDING  
ENVELOPE ENGINEERING

SPECIALTY STRUCTURAL  
SERVICES

SUSTAINABILITY + RESILIENCY

[www.mgmclaren.com](http://www.mgmclaren.com)



HIGH-RISE

MID-RISE

LOW-RISE

PODIUM BUILDINGS

LONG SPAN BUILDINGS

PREFABRICATED BUILDINGS

# NEW CONSTRUCTION ENGINEERING + DESIGN

Spanning high-rise mixed-use developments to high-performance healthcare facilities, expansive hotel casino complexes, and everything in between, our company has experience building all types of structures from the ground up. McLaren's diverse new construction portfolio includes thousands of structures of varying sizes and each constructed with distinct materials. From traditional to avant-garde, we offer advanced design-build capabilities and value engineering solutions across 10 distinct markets to best support our clients' unique needs.



416 + 420 Kent Mixed Use - NYC



# APPLIED INGENUITY



QUIN + LENNOX MIXED-USE RESIDENTIAL - NJ



LIVE! MARYLAND CASINO + HOTEL - MD



3 LIGHT MIXED-USE RESIDENTIAL - MO



THE PENNANT MIXED-USE APARTMENTS - MD



BALDWIN HARBOR LUXURY APARTMENTS - FL



THE SMYTH MIXED-USE - CT



ADAPTIVE RE-USE  
VERTICAL EXPANSIONS +  
ADDITIONS  
TENANT FIT-OUTS + RETROFITS  
RENOVATIONS  
HISTORIC PRESERVATION  
REPAIR + RESTORATION

# ADDITIONS, ALTERATIONS, REPAIRS + RENOVATIONS

The most successful renovation and alteration projects are engineered with structural expertise, code compliance, and occupancy needs in mind. McLaren's extensive work in structural modification utilizes creative adaptive solutions and technology to best construct efficient space changes.





# APPLIED INGENUITY



WWE CORPORATE FIT OUT - CT



RUMBLE FITNESS RETAIL FIT OUT - PA



INMAR CORPORATE HEADQUARTERS  
ADAPTIVE REUSE - NC



BAILESC THEATER HISTORIC PRESERVATION  
RESTORATION - NYC



APPRAISER'S BUILDING ADAPTIVE REUSE - MD



195 BROADWAY HISTORIC LOBBY  
RENOVATION - NYC



STRUCTURAL CONDITION  
ASSESSMENTS  
(PER ASTM E2018-015)

SPECIAL INSPECTIONS

CODE COMPLIANCE  
REVIEWS + INSPECTIONS

INSURANCE CLAIMS

BUILDING MONITORING

SURVEY, SCANNING +  
MAPPING

FORENSIC INVESTIGATION

LOAD RATINGS

SPRAT CERTIFIED ROPE  
ACCESS INSPECTIONS

# INVESTIGATION + INSPECTION

---

Building structures can deteriorate or fail in a variety of ways throughout their lifecycle. Our detailed investigation and inspection services can identify structural damage, perform root cause analysis, and help provide remediation support.





# APPLIED INGENUITY



111 VARICK SPECIAL INSPECTIONS - NYC



CULTURAL CENTER BUILDING CODE  
ASSESSMENTS - MD



COLLEGE PART COMMUNITY CENTER FORENSIC  
INVESTIGATION - FL



STEVENS INSTITUTE OF TECHNOLOGY BUILDING  
CODE ASSESSMENTS - NJ



STRUCTURAL ON CALL CITY OF YONKERS  
FIRE HOUSES - NY



NATHANS HOT DOG CONTEST STAGE  
STRUCTURAL INSPECTIONS - NYC



BUILDING ENVELOPE CONSULTING  
FACADE DELEGATED DESIGN  
SPECIALTY GLASS ENGINEERING  
INSPECTIONS, INVESTIGATION +  
REMEDATION

# **FACADE + BUILDING** ENVELOPE ENGINEERING

McLaren's facade engineering services focus on the largest, most important factor in the technical performance and overall aesthetic of any structure, the building envelope. Our specialized engineers are skilled in the interdependence of envelope elements throughout the building's life cycle and aim to improve constructability, maximize energy efficiency, strengthen security, and enhance architectural vision.

520 W. 28th Street Metal Façade - Zaha Hadid - NYC



# APPLIED INGENUITY



HAYDEN PLANETARIUM GLASS  
CURTAIN WALL - NYC



1901 MARKET STREET CLADDING  
ACCENT WALL - PA



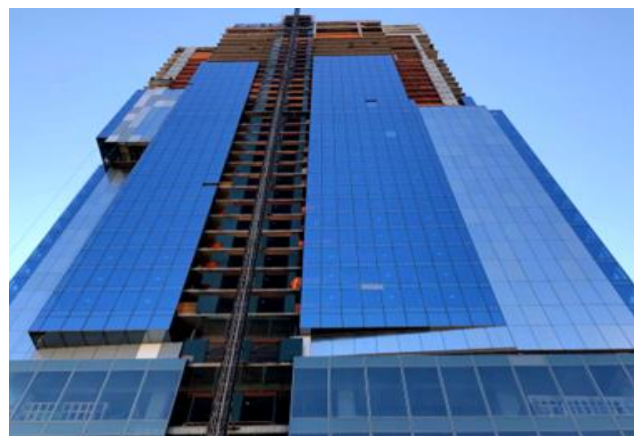
560 LEXINGTON AVE  
CURVED GLASS - NYC



LAGUARDIA AIRPORT CTB RENOVATION - NYC



AMERICAN WATER HEADQUARTERS  
METAL PANEL FACADE - NJ



VIRGIN HOTEL UNITIZED CURTAIN WALL - NYC



**McLaren**  
ENGINEERING GROUP



BLAST DESIGN

ASSET MANAGEMENT SERVICES

PARKING CONSULTING

FORENSIC INVESTIGATION +  
EXPERT WITNESS TESTIMONY

PEER REVIEW

POST DISASTER EMERGENCY  
RESPONSE (ATC-20 AND ATC-45  
INSPECTIONS)

# SPECIALTY STRUCTURAL SERVICES

---

The ability to solve complex challenges from all angles helps our team provide high-quality specialty structural services. Skilled in all aspects of multi-phase structural engineering, our services have evolved to better support the needs of our clients.



# APPLIED INGENUITY



GETTY 239 TENTH AVE CURTAIN WALL  
PEER REVIEW - NYC



EQUITABLE BUILDING MIXED USE CONVERSION  
PEER REVIEW - MD



PIER 5 COLUMBUS CENTER  
PARKING GARAGE - MD



I 40 BRIDGE COLLAPSE FORENSIC ENGINEERING  
AND EXPERT TESTIMONY - OK



SUPERSTORM SANDY DEBRIS INSPECTION - NY



WINTER VILLAGE AT BRYANT PARK  
SPECIAL INSPECTIONS - NYC



BLUE ROOFS

GREEN ROOFS

LEED CERTIFICATION

SOLAR ROOFTOPS, CARPORTS +  
FARMS

WIND ENERGY

FLOOD RISK ASSESSMENT +  
MITIGATION

# SUSTAINABILITY + RESILIENCY

---

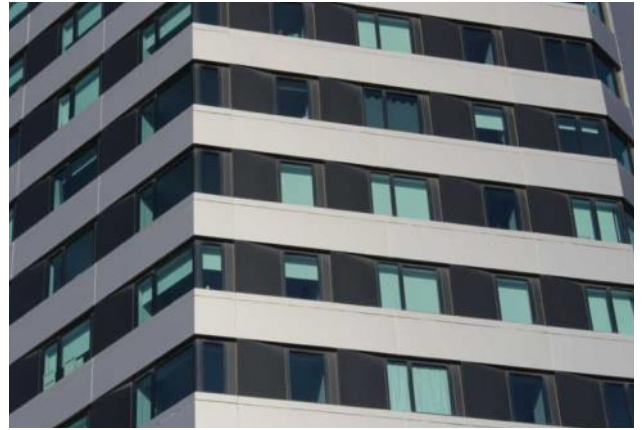
At McLaren, we understand sustainable building strategies can create structures that are higher performing and help make a positive impact on our communities. We are committed to helping our clients build greener and adapt to carbon reducing guidelines.



# APPLIED INGENUITY



PRUDENTIAL SOLAR CARPORT - NJ



THE HOUSE AT CORNELL TECH  
LEED PASSIVE HOUSE GLAZING - NY



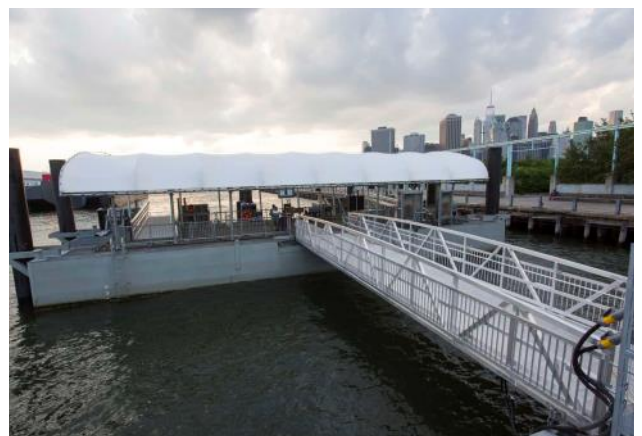
BROOKLYN STEEL GREEN ROOF - NYC



OFFSHORE WIND + NEARSHORE FACILITY SUPPORT  
NORTHEAST USA



NATIONAL AQUARIUM FLOATING WETLAND  
STRUCTURAL DESIGN - MD



NYC FERRY SYSTEM RESILIENT  
LANDING DESIGN - NYC





### **NEW JERSEY (HEADQUARTERS)**

530 Chestnut Ridge Road  
Woodcliff Lake, NJ 07677  
201.775.6000  
[mgmclaren@mgmclaren.com](mailto:mgmclaren@mgmclaren.com)

### **NEW YORK CITY**

131 West 35th Street, 4th Floor  
New York, NY 10001  
212.324.6300

### **NY CAPITAL DISTRICT**

5 Clinton Square, 3rd Floor  
Albany, NY 12207  
518.992.4830

### **MARYLAND**

601 East Pratt Street, Suite 302  
Baltimore, MD 21202  
410.243.8787

### **FLORIDA**

201 North Magnolia Avenue  
Suite 101  
Orlando, FL 32801  
407.354.5411

### **PHILADELPHIA**

One Washington Square  
510 Walnut Street, Suite 1600  
Philadelphia, PA 19106  
215.310.3765

### **LEHIGH VALLEY**

5100 West Tilghman Street  
Suite 265  
Allentown, PA 18104  
610.571.3240

### **GEORGIA**

2573 Weeping Oak Trace  
Marietta, GA 30062  
404.891.6412

### **CALIFORNIA**

2044 Beebee Street  
San Luis Obispo, CA 93401  
818.652.9157

### **CONNECTICUT**

500 West Putnam Avenue  
Suite 400  
Greenwich, CT 06830  
203.244.1122



[www.mgmclaren.com](http://www.mgmclaren.com)