



McLaren
ENGINEERING GROUP

BRIDGE INSPECTION SERVICES





McLaren Engineering Group – Headquarters
530 Chestnut Ridge Road, Woodcliff Lake, NJ 07677
Ph. 1-800-420-6401

49

States
Licensed

15,000+

Projects
Completed

11

Offices
Worldwide

43

Years of
Applied Ingenuity



About Us

McLaren Engineering Group is a leading full-service engineering firm renowned for its trusted, high quality and innovative approach to solving complex challenges. With experts in multiple technical disciplines, our team has provided customized solutions for over 15,000 projects through conception, design, inspection, and construction management. With over four decades of industry leading experience, a staff of 250+, and 11 offices worldwide, McLaren addresses every project's specific needs with technical excellence and creative innovation.



Malcolm McLaren, PE, SECB

Founder + CEO

Mgmclaren@mgmclaren.com

CORE TECHNICAL SERVICES

STRUCTURAL | CIVIL + SITE | MARINE + COASTAL | BRIDGE, HIGHWAY + RAIL
ENTERTAINMENT | GEOTECHNICAL | FACADE + BUILDING ENVELOPE
CONSTRUCTION ENGINEERING | FORENSICS | SURVEY + MAPPING



ABOVE + UNDERWATER INVESTIGATIONS

With the most advanced and reliable services available in-house, McLaren's Bridge Inspection team is a well-known industry leader in New York, the Northeast, and across the nation.

Consisting of expert engineers, divers, surveyors, designers, and scientists, our firm is able to provide some of the best services in complex inspection, rehabilitation, and repair.

In addition to underwater PE divers and Rope Access Inspectors, we have the capabilities to mobilize quickly and investigate from land, water, and air using various survey and mapping methods. With the latest technology, McLaren produces accurate and compelling deliverables for projects of any size, shape, scope, or complexity.

From offices nationwide, we provide clients with innovative engineering services from concept to completion and full lifecycle management.

PE DIVER INSPECTIONS
HYDROGRAPHIC SURVEYS
FATHOMETRIC/BATHYMETRIC
GEOPHYSICAL SURVEYS
DRONE SURVEYS
ROPE ACCESS INSPECTIONS
BOAT ACCESS SURVEYS
UNMANNED REMOTE
CONTROL SURFACE
VEHICLE INSPECTIONS (sUSV)
REALITY CAPTURE 3D LIDAR
SCANNING
FULL DESIGN SERVICES

www.mgmclaren.com

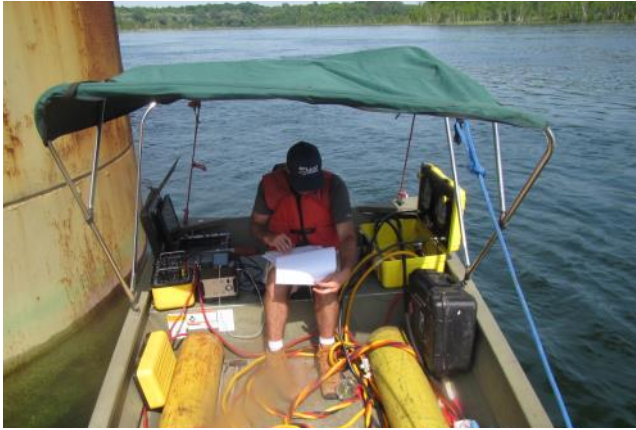
Dive Inspections
Transportation System Impact Studies
Safety Inspection
Load Rating Analysis
Rehabilitation Design + Remediation
Condition Assessment
Feasibility Studies
Structural Evaluation
Maintenance Management System
Forensic Evaluation
Service Life Evaluation

BRIDGE INSPECTION, MAINTENANCE + REHABILITATION

McLaren's bridge inspection team is available to assess conditions, file state and federal inspection reports, and most importantly, use our system of computerized management tools to compile assembled inspection data and focus on the prioritization of deficient elements.

Our bridge inspection staff are **NHI**, **NBIS**, **NICET**, **NACE**, and **SPRAT** certified and employ access techniques ranging from hard-hat diving to abseiling – meaning no aspect of a bridge inspection will go unreached. In short, our engineers are trained, experienced, and prepared to provide services through all aspects of any project.

APPLIED INGENUITY



BARNHART BRIDGE INSPECTION



NIAGARA FALLS BRIDGE INSPECTION



NYS DOT BRIDGE INSPECTION



MOTEMS DIVE INSPECTION



CONDOT DIVE BRIDGE INSPECTION



CAPITAL CRESCENT TRAIL BRIDGE INSPECTION



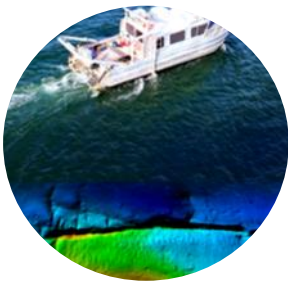
WESTCHESTER BUNDLED BRIDGE INSPECTIONS



SHALLOW WATER Z-BOAT
MULTIBEAM SURVEY



HYDROGRAPHIC
BRIDGE SURVEY



GEOPHYSICAL
MULTIBEAM SURVEY

HYDROGRAPHIC + GEOPHYSICAL

McLaren's in-house hydrographic survey and mapping team is an integral part of accurate bridge inspections. Equipped with state-of-the-art survey equipment, vessels, and technology, we perform a variety of specialized hydrographic, fathometric, and bathymetric geophysical surveys.

Our team is able to provide advanced analysis for bridge conditions, flood inundation, scour and stabilization, water-quality studies, habitat mapping, environmental spills, and everything in between.

Survey Services

Multibeam Bathymetry

Singlebeam Bathymetry

Fathometric Survey

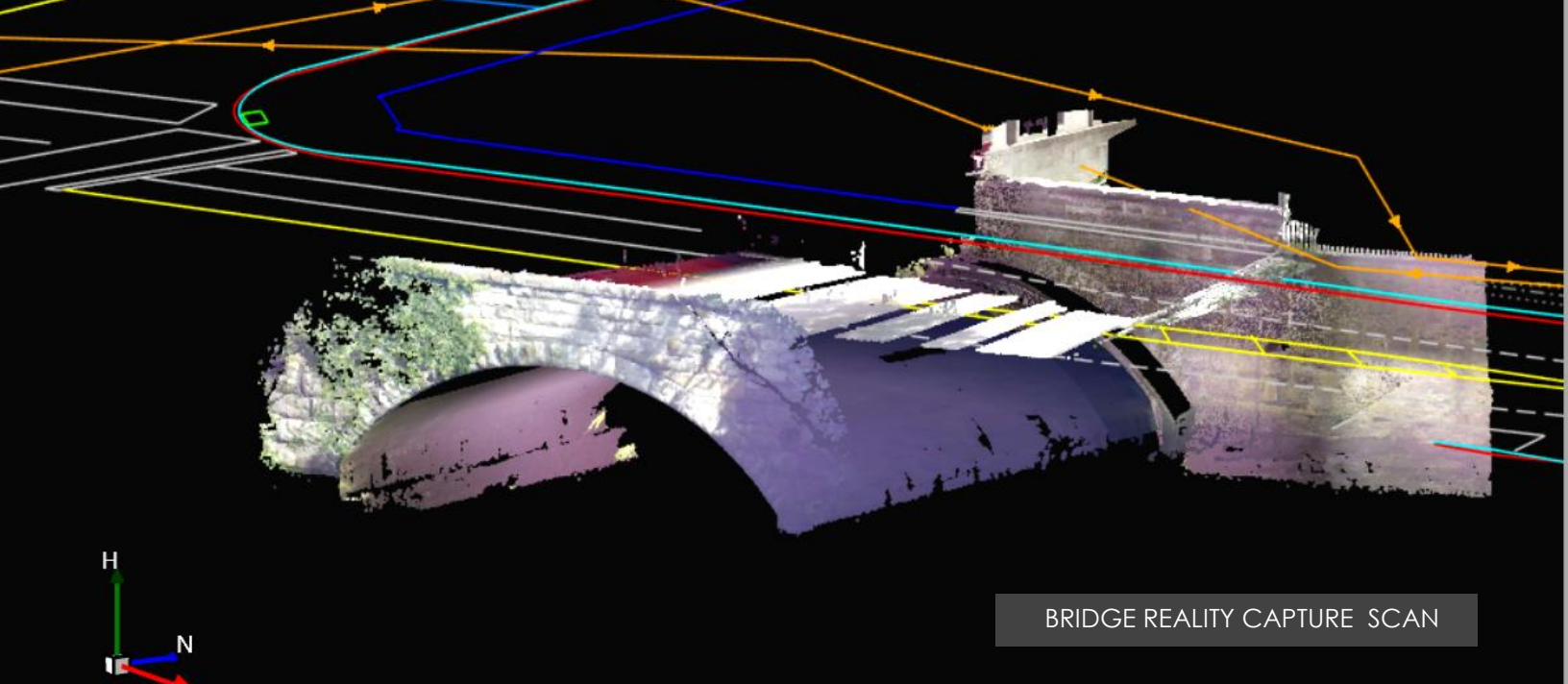
Geophysical Surveys - Side Scan Sonar,
Magnetometer + Sub-bottom

Small Unmanned Surface Vessels (sUSV)

Drones + Unmanned Aerial Systems (sUAS)

Mobile & Stationary 3D LiDAR / Laser Scanning

Geohazard Surveys



STATE-OF-THE-ART DELIVERABLES

McLaren provides deliverables to give our clients the full picture, above the water and below. Providing detailed analysis of subsea conditions and 3-D modeling of geological obstructions, man-made debris, environmentally and politically sensitive areas, our bridge inspection services provide the most advanced and accurate information.

Taking all variables into consideration, our trusted approach offers complete confidence with comprehensive surveys options for any bridge inspection.

Deliverables

Feasibility Studies

Condition Analysis Reports

Load Ratings

Compiled Sonar Imaging

Reality Capture Scans

Simulations

3D Computer Modeling

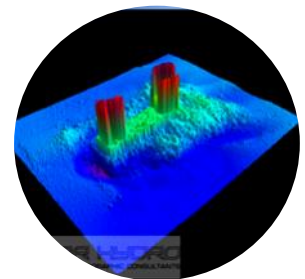
Designs + Drawings



FATHOMETRIC SURVEY
SIMULATION



COMPILED SONAR
IMAGING



BRIDGE 3D IMAGING



UNDERWATER INVESTIGATION



INSPECTION ANALYSIS



DIVING 365 DAYS
A YEAR



EMERGENCY
RESPONSE

PE DIVER INSPECTION

Underwater inspections by a team of expert PE Divers can provide unparalleled analysis for any bridge inspection.

From visual condition assessments to non-destructive testing analysis, McLaren possess the specialized ability to properly identify items of importance for underwater bridge inspections, providing a below-sea look to best make recommendations and provide design services for lifecycle management, rehabilitations, and repairs.

Diving Services

Full Fleet of Vessels

Emergency Response Team

Professional Engineer Divers

Non-Destructive Testing

Hammer Testing

Visual Condition Surveys

Responsive + Quick to Mobilize



WALKWAY OVER THE HUDSON BRIDGE INSPECTION

ALTERNATIVE ACCESS SURVEYS

Access constraints can be a challenge for many bridge inspections. McLaren provides innovative solutions that can overcome even the most challenging investigations.

Our team can provide alternative access surveys and condition assessments utilizing aerial drones, SPRAT certified rope access technicians, and an entire fleet of marine and survey vessels that can inspect in shallow and deep waters.

Access Services

SPRAT Certified Rope Access

Drone Investigation Surveys

Remote Unmanned Vessels

Marine and Survey Boat Fleet

Inspection Vehicle Fleet

Abseiling



DRONE INSPECTIONS



ROPE ACCESS SPRAT
CERTIFIED



VESSEL FLEET



NEW JERSEY (HEADQUARTERS)

530 Chestnut Ridge Road
Woodcliff Lake, NJ 07677
201.775.6000
mgmclaren@mgmclaren.com

NEW YORK CITY

131 W. 35th Street, 4th Floor
New York, NY 10001
212.324.6300

NY CAPITAL DISTRICT

5 Clinton Square, 3rd Floor
Albany, NY 12207
518.992.4830

MARYLAND

601 E. Pratt Street, Suite 302
Baltimore, MD 21202
410.243.8787

FLORIDA

201 N. Magnolia Avenue
Suite 101
Orlando, FL 32801
407.354.5411

PHILADELPHIA

One Washington Square
510 Walnut Street, Suite 1600
Philadelphia, PA 19106
215.310.3765

LEHIGH VALLEY, PA

5100 W. Tilghman Street
Suite 265
Allentown, PA 18104
610.571.3240

GEORGIA

4590 Kettering Drive NE
Roswell, GA 30075
404.891.6412

CALIFORNIA

2044 Beebee Street
San Luis Obispo, CA 93401
818.652.9157

CONNECTICUT

500 West Putnam Avenue
Suite 400
Greenwich, CT 06830
203.244.1122



www.mgmclaren.com